

23 Neale Road, Chorlton Green, Manchester, M21 9DP

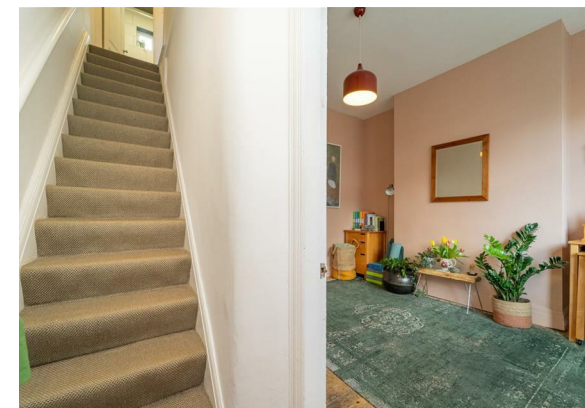


JP&Brimelow
ESTATE AGENTS

Offers In The Region Of £400,000




VIDEO TOUR AVAILABLE A spacious and extended, TWO DOUBLE BEDROOM, garden fronted, period mid terrace property. Situated on a highly desirable tree lined road in the heart of Chorlton Green off Beech Road. Within easy walking distance to all the independent shops, bars, restaurants, Beech Road Park, Chorlton Nature Reserve and fantastic primary and secondary schools. In summary, the accommodation comprises an entrance hallway, a dining room featuring a front-facing bay window, and an impressive open-plan extended modern kitchen and lounge to the rear, with direct access to the enclosed courtyard garden. Stairs lead to the first floor, which houses two double bedrooms and a three-piece bathroom suite. The property further benefits from gas-fired central heating and a private, landscaped rear courtyard. internal inspection is essential to appreciate this stunning home.





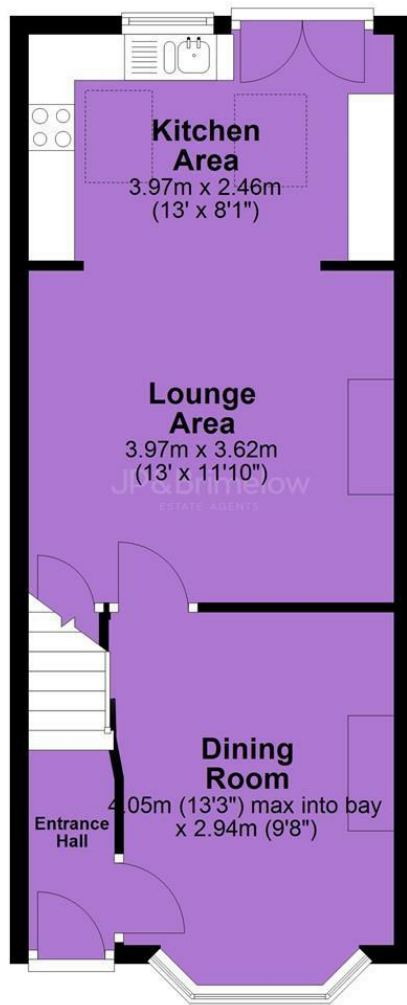
EPC Chart

Energy Efficiency Rating		
	Current	Potential
<i>Very energy efficient - lower running costs</i>		
(92 plus) A		
(81-91) B		82
(69-80) C	71	
(55-68) D		
(39-54) E		
(21-38) F		
(1-20) G		
<i>Not energy efficient - higher running costs</i>		
England & Wales	EU Directive 2002/91/EC 	

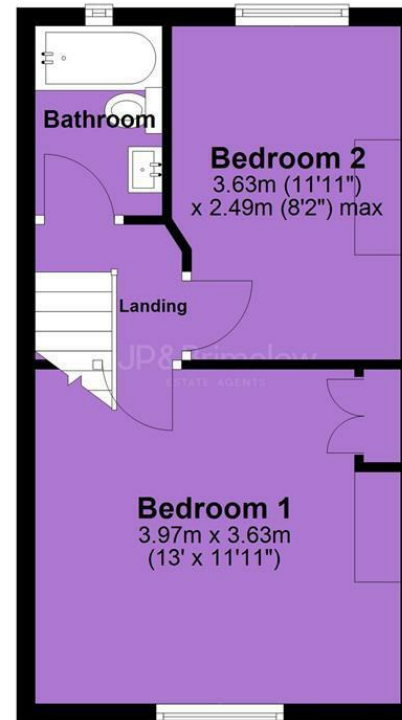


Tenure: **Freehold** Council Tax Band: **B**

Ground Floor



First Floor



JP & Brimelow Estate Agents Ltd
430 Barlow Moor Road, Manchester, M21 8AD
Tel: 0161 8822233
E: sales@jpbrimelow.co.uk www.jpandbrimelow.co.uk



JP & Brimelow
ESTATE AGENTS

NOTICE: JP & Brimelow Estate Agents Ltd for themselves and for the vendors or lessors of this property whose agents they are give notice that:

- (i) the particulars are set out as a general outline only for the guidance of intending purchasers or lessees, and do not constitute, nor constitute part of, an offer or contract;
- (ii) all descriptions, dimensions, references to the condition and necessary permissions for use and occupation, and other details are given in good faith and are believed to be correct but any intending purchasers or tenants should not rely on them as statements or representations of fact but must satisfy themselves by inspection or otherwise as to the correctness of each of them;
- (iii) no person in the employment of JP & Brimelow Estate Agents Ltd has any authority to make or give any representation or warranty whatever in relation to this property.

jpandbrimelowstateagents

@jpandbrimelow